

- **How to tighten filament #20 sewing thread.**
- **How to resolve feed dog trace.**

[Required conditions]

Material : Suede

4 layers

Machine type : lockstitch machine

Machine speed : 2000rpm/min

Needle : DBx1 No.14

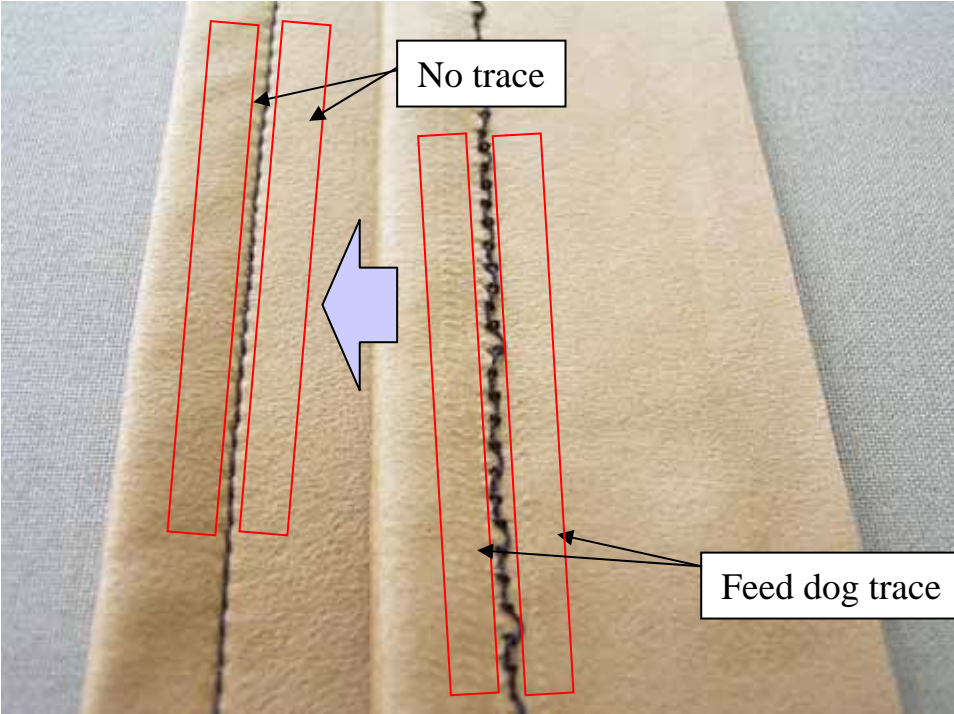
Needle thread : 100% polyester filament sewing thread

Bobbin thread : 100% polyester filament sewing thread

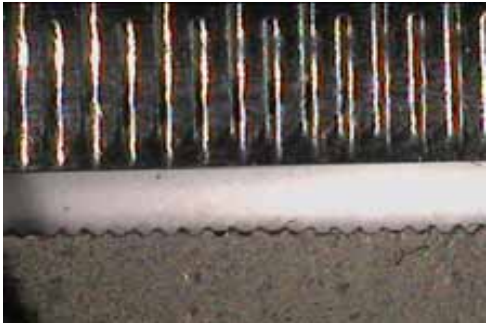


Counter measure of feed dog trace

The feed dog traced was erased using special fine feed dog.



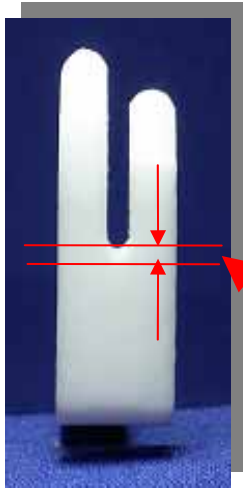
Special fine feed dog



Special fine Feed dog Standard Feed dog

This is our original laboratory data, so that it is not be guaranteed data.

Photo of presser foot in case of problem.



Tefly presser foot

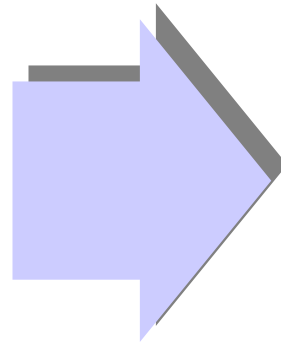
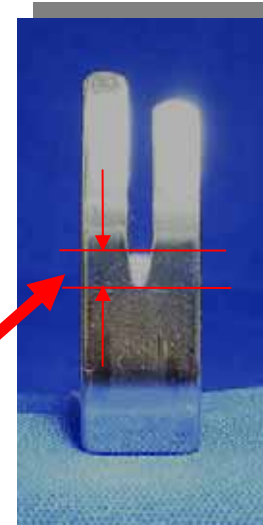
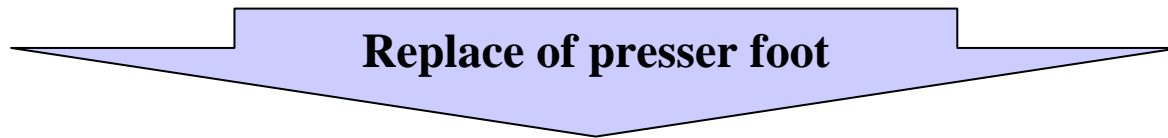


Photo of presser foot for recommended.



Standard presser foot

Slit length of presser foot



Needle thread



Bobbin thread